

Class II Restoration with Microscopes using 3D XR Ring

Procedure/Study by

Dr. John Leitner, DDS

Composi-Tight® 3D XR 

SlickBands™ 

G-Wedge™ 



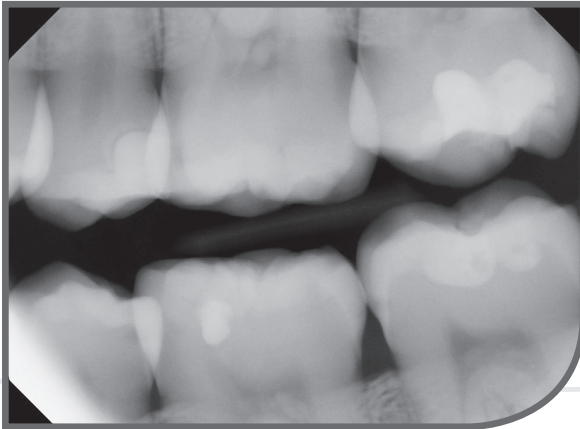
Class II Restoration with Microscopes using 3D XR Ring

By John Leitner, DDS

Dr. Leitner received his D.D.S. from University of Michigan in 1982. Following his degree he worked in several different settings to gather knowledge and skills. He owned a practice in Pennsylvania for five years before coming back home to take over his father's practice in Grand Haven, MI. His office was the first to embrace surgical microscopes and TekScan occlusal analysis in Western Michigan, and one of the first to offer complete digital records, and Periolase laser treatments. The world is constantly changing and advancing, and he believes continuing education combined with flexibility is important in offering excellent care for his patients.

Dr. Leitner has been a member of the Academy of Microscopic Enhanced Dentistry (AMED) since 2004, and is a member of the Garrison Advisory Board where he offers his expertise and technical insight.

01



Pre-op x-ray. Because of the age of the patient and prior caries history, I felt treatment was needed on smaller interproximal caries.

02a

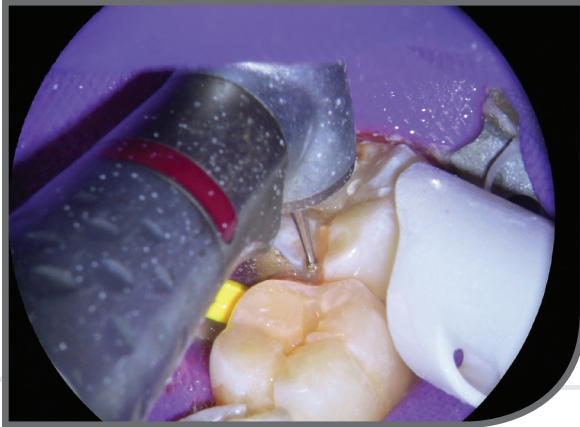


View prior to preparation.

02b



03



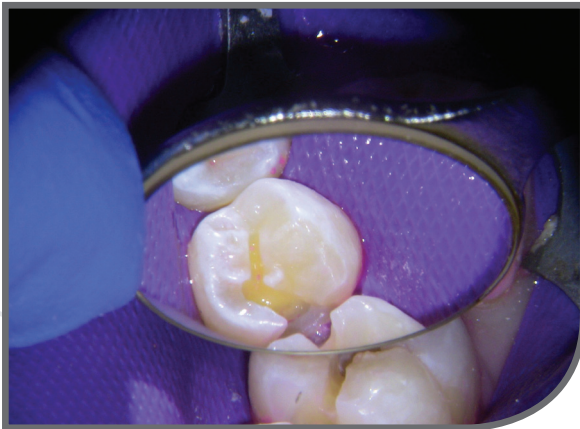
I use microscopes and therefore try to create the smallest preparations I can. The two burs that I use 95% of the time are Neodiamond pear #0508M and flame #1510.8M on the BienAir high speed setting.

04



Danby caries stain to enhance caries recognition along with light and magnification of the scope.

05a



Interproximal contacts are removed to make room for unimpeded band placement.

05b



06



Placement of Garrison bands and orange wedge to flush band up against the axial floor of prep.

07a



Blue 3D XR Garrison matrix ring used to tighten contacts.

07b



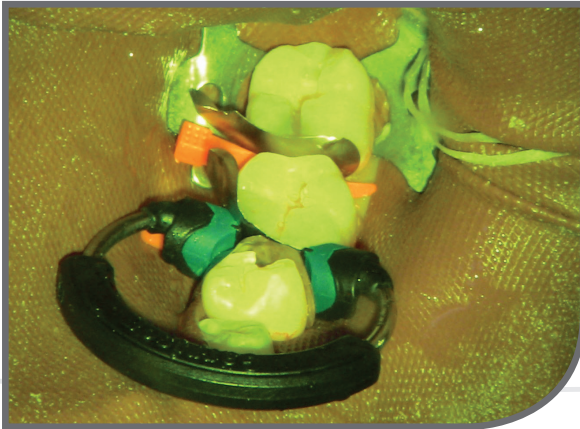
Closeup of Blue 3D XR Garrison matrix ring used to tighten contacts.

08



For composite, I currently use Hemaseal, Vitrabond, Scotchbond, and then place in a small amount of Filtek Flow and Filtek Supreme layers to build up the shape needed.

09



I like the quick cure of a plasma light. The yellow tint is from the scope filter to prevent early curing of materials.

10a

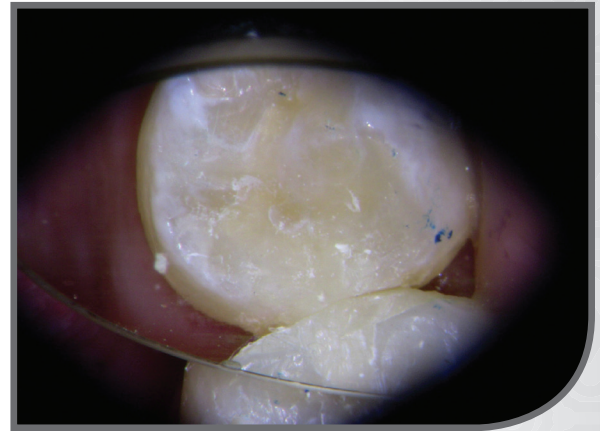


Several views of final shapes and contours after polishing.

10b



10c

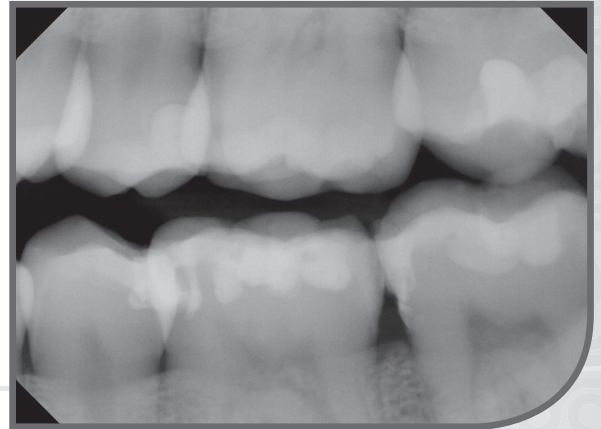


11



Post-op view.

12



Post-op x-ray.

Garrison
Dental Solutions

150 DeWitt Lane
Spring Lake, MI USA
49456
Toll free 888.437.0032

European office:
Carlstr. 50
52531 Uebach-Palenberg
Germany
Tel. +49 (0) 2451 971 409

www.garrisondental.com

CS-000-02-93